

CAPITAL CONTROLS[®] **Disinfection and** **Instrumentation Offerings**

**Simply the Best Gas Feeders
for Any Application**

De Nora Water Technologies is a leading provider of water and wastewater treatment technologies. Our company brings together numerous proven, established and market leading technologies and brands specifically designed for the treatment of municipal and industrial water and wastewater.

De Nora Water Technologies provides a variety of disinfection technologies and recognized brands such as AQUAWARD[®], BALPURE[®], CAPITAL CONTROLS[®], CHLOR-A-VAC[®], ClorTec[®], D-Chlor[™], EST[™], MicroChem[®], SANURIL[®], UAT[®] and VEGA[™].

Our disinfection technologies include:

- Gas Feed Systems for Chlorine, Sulfur Dioxide, Ammonia and Carbon Dioxide
- Sodium Hypochlorite Generators
- Chlorine Dioxide Generators
- Tablet Feeders
- UV Disinfection Units
- Chemical Induction Systems
- Water Quality Monitors
- Controllers
- Gas Detectors
- Wet and Dry Emergency Gas Scrubbers



Gas Feeders and Control Valves

Series 480

- Economical and robust
- Capacities to 5 kg/h
- For Chlorine
- 3 year warranty



Model 611 Direct Gas (Pressure)

- Capacities to 2 kg/h
- For Chlorine
- For use in remote locations where no power or booster pump is available.



Series 200

- Capacities up to 10 kg/h
- Four Gases: Chlorine, Sulfur Dioxide, Ammonia, Carbon Dioxide
- 3 year warranty



Series 1420/1520 Chlor-A-Vac® Chemical Induction Unit

- Gas or Liquid Feed
- Capacities to 120 kg/h Gas and 188 lpm Liquid
- Superior mixing technology which replaces conventional booster pumps, diffusers and mechanical mixers.



Series NXT3000

- Capacities to 60 kg/h
- Four Gases: Chlorine, Sulfur Dioxide, Ammonia, Carbon Dioxide
- Built-in changeover and modular metering.
- Ejector with dual check valves and drain valve standard
- 3 year warranty



Series 2000CV Control Valve

- Single Input Controller
- NEMA 3R Enclosure
- Capacities up to 60 kg/h
- Four Gases: Chlorine, Sulfur Dioxide, Ammonia, Carbon Dioxide
- Sonic Operation



Series 3000CV Control Valve

- 3 input microprocessor-based integral controller
- NEMA 4X Enclosure
- Capacities up to 60 kg/h
- Four Gases: Chlorine, Sulfur Dioxide, Ammonia, Carbon Dioxide
- Sonic Operation



Gas Feeders - Wall Mounted

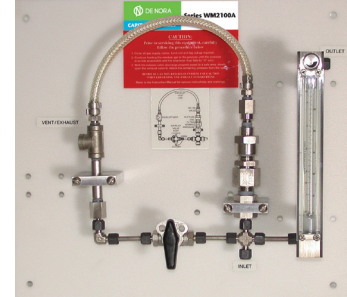
Series 2000WP

- Single input control
- Capacities to 60 kg/h
- Sonic Operation
- Optional vacuum gauge and alarm switches



Series WM2110 Pressure Feed Ammoniator

- Eliminates hard water precipitation
- Capacities to 40 kg/h
- Back Pressures to 25 psig
- Manual or automatic control



Series 3000WP

- 3 input control
- Capacities to 60 kg/h
- Sonic Operation
- Optional vacuum alarm switches



Series 8000WP

- Manual or automatic control available
- Capacities to 150 kg/h
- Differential pressure regulated
- Single input control standard
- 2 - 3 input control with optional controller





Gas Feeders - Floor Cabinets

Series 4100B

- Compact Cabinet
- Sonic Operation
- Manual or automatic control
- Capacities to 60 kg/h
- Four Gases: Chlorine, Sulfur Dioxide, Ammonia, Carbon Dioxide
- Floor cabinet features with reduced footprint



Series 4200B

- Compact Cabinet
- Manual or automatic control
- Capacities to 150 kg/h
- For Chlorine, Sulfur Dioxide and Carbon Dioxide
- Floor cabinet features with reduced footprint



Series 5200B

- Full Size Floor cabinet
- Manual or automatic control
- Capacities to 200 kg/h
- Four Gases: Chlorine, Sulfur Dioxide, Ammonia, Carbon Dioxide



Vaporizer - Floor Cabinet

Series 71V3B

- Liquid vaporizer for Chlorine, Sulfur Dioxide and Ammonia
- Capacities to 227 kg/h Cl_2
- Robust design provides superior gas superheat without water circulation pump
- ASME Section 8 and Lethal Gas Certified



Instruments

MicroChem®

- Panel mounted or modular design allows simple configuration for different applications
 - Color Touch Screen Display allows easy navigation through software
 - Built in data logger
 - Built in PID controller
 - 6 language capability
 - NEMA 4X, CE, CSA
- Can measure up to three of the following parameters:
 - Free/Total Chlorine
 - Chlorine Dioxide
 - pH
 - ORP
 - Conductivity



KC4 Cell

- Free Chlorine or Chlorine Dioxide
- Drinking/Clean Water
- 2 Electrode, Bufferless Measurements



870 Cell

- Free/Total Chlorine
- Waste/Drinking/Process Water
- 2 Electrode, Buffered Measurement for use with elevated or unstable pH levels



CL4 Cell

- Free Chlorine
- Drinking/Clean Water
- 3 Electrode, Bufferless Measurements



CL1 Cell

- Free/Total Chlorine
- Waste/Drinking/Process Water
- 3 Electrode, Buffered Measurements



Instruments

CAPTROL® Model 1451 Controller

- Microprocessor-based
- Alphanumeric display data
- Fully field configurable
- Single loop backup in compound loop control
- Control with long lag time



Model T17CA4000 Chlorine Detector

- Economy Gas Detector
- For Chlorine
- 1 or 3 ppm set point



Series 1041B Changeover Controller

- Manual Override
- Programmable Logic Controller
- Graphic "Mimic" Panel
- Field Configurable
- NEMA 4X Enclosure



Model 1017B Changeover Controller

- Changeover Controller for Vacuum or Pressure Systems
- Provides duty/standby/fail system status
- Manual override mode: Overrides automatic control allowing individual control of system valves.



Series 1610B/1620B Gas Detectors

- Single/multi point chlorine gas detector
- Up to 8 Sensors
- Economical monitoring for chlorine gas leaks, using electrochemical sensor technology.
- For Chlorine and Sulfur Dioxide



Model 17CA3000 Gas Detector

- Hazardous gas monitor
- Micro-processor provides full features and up to 4 sensor capability.
- Provides multiple location monitoring for chlorine gas leaks.
- For Chlorine and Sulfur Dioxide



Ozone Generator Systems

MCP Series

- 40 g/h to 1400 g/h Ozone
- Plug and play/fully automated system – Simple start up and ease of use



TPF Series

- 1 kg/h to 37 kg/h Ozone
- Plug and play/fully automated system – Simple start up and ease of use



DTPF Series

- Up to 113 kg/h Ozone
- Plug and play/fully automated system – Simple start up and ease of use



Chlorine Dioxide Generators

Model G50

- Chlorine gas and Sodium Chlorite precursors
- All Vacuum System
- > 95% Yield
- Capacities to 50 kg/h



Model T70G4000

- All Liquid
- Sodium Chlorite and HCL acid precursors
- No Cl_2 gas
- All Vacuum System
- Capacities to 10 kg/h

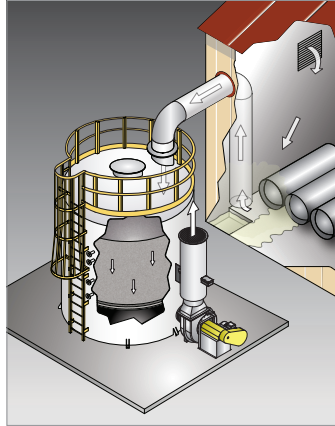




EST™ Emergency Gas Scrubbers

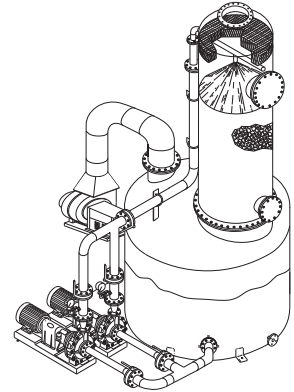
Type DES Dry Emergency Scrubber

- For One-Ton Containers
- Uses Media, no caustic management issues
- One moving part - Fan



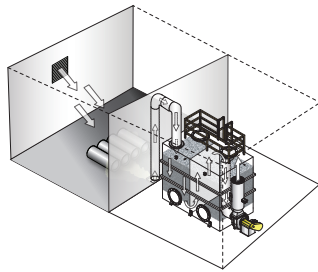
Type EPT Emergency Packed Tower

- Economy Wet Scrubber using caustic
- Sized for standard cylinders and ton containers



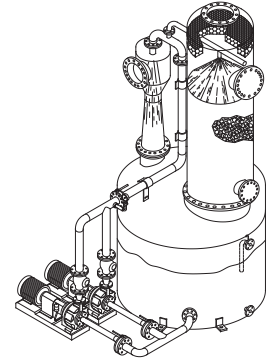
Type DES-LP Low Profile Dry Emergency Scrubber

- For One-Ton Containers
- Uses Media, no caustic management issues
- One moving part - Fan



Type ECS Ejector Venturi Packed Tower

- True Emergency Scrubber
- 2-stage scrubbing in Venturi and Packed Tower
- No blower required
- Sizes for cylinders, tons, tank trucks and RR cars



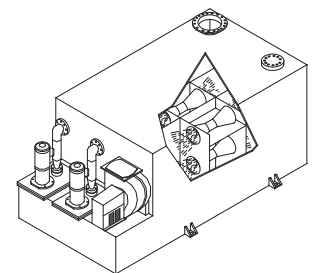
Type DSH Dry Scrub House

- For 150-Pound Cylinders
- Uses Media, no caustic management issues
- One moving part - Fan



Type MVP Multi Venturi Packless

- No packed tower
- Multiple Venturi Scrubbing
- Low profile



WATER MADE EASY

MARINE

ENERGY

MUNICIPAL

INDUSTRIAL



info.dnwt@denora.com

www.denora.com

© Copyright 2019 Industrie De Nora S.p.A. - All rights reserved.

De Nora, ON circle, Our research - your future, electrochemistry at your service (and any other trademark name) are trademarks or registered trademarks of Industrie De Nora S.p.A. in Europe and/or other countries. Other trademarks used herein are the registered trademarks of their respective owners. The information contained herein is offered for use by technically qualified personnel at their discretion and risk without warranty of any kind.

DNWT - CAPITAL CONTROLS® Disinfection and Instrumentation Offering - 999C1220AP.12 - 3/2019